



CARMAR ACCURACY CO., LTD.



Quickly stitch the field of view



CARMAR ACCURACY CO., LTD.

Head Office : [No. 6, 23rd Road , Industrial Park ,  
Taichung City 40850 , Taiwan](#)

TEL:886-4-23592289

FAX:886-4-23598060

E-mail : [carmar.tech@msa.hinet.net](mailto:carmar.tech@msa.hinet.net)

<http://www.carmar-tech.com>



### Timing of use:

#### ✦ Incoming Quality Control



Use when receiving supplier materials. If abnormalities are detected, request the supplier to return or exchange the goods to avoid using inferior quality products that could result in product defects

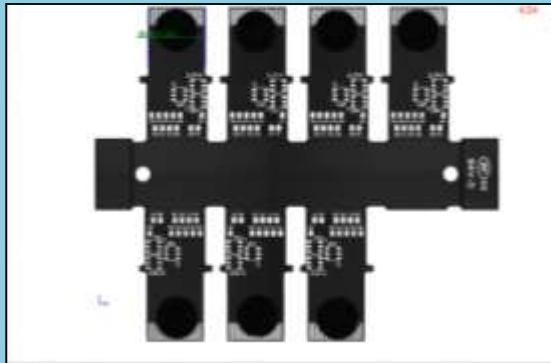
#### ✦ Experimental Batch Inspection



Products are tested during prototyping. Mass production is initiated only when the process that meets product specifications is simulated, to avoid wasting raw materials

### ➤ Application Example

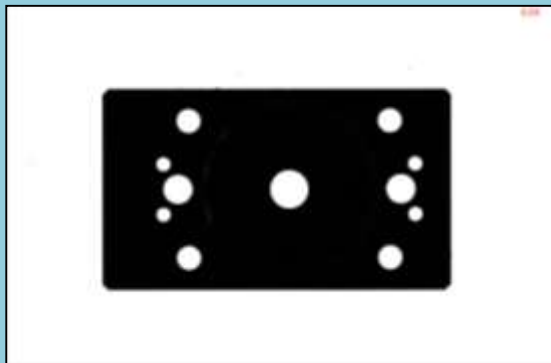
#### ➤ PCB



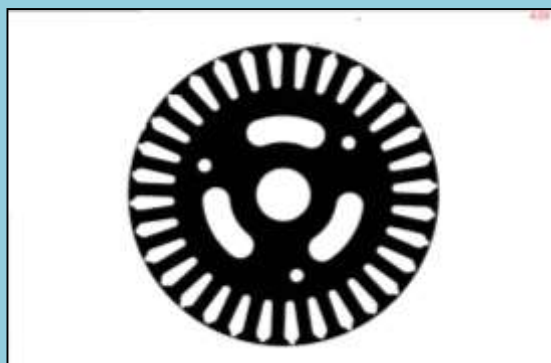
#### ➤ Busbar Frame



#### ➤ Large Machined Parts



#### ➤ Lathe Wash Parts



### Features:

#### Custom Stitching View:

Customize the stitched image view.

#### Field of View Setting:

Set the field of view, measure the entire area for a single file creation.

#### Multi-Workpiece Measurement:

Measure multiple workpieces at the same time.

#### Quick Stitching:

Stitch a 200 mm x 200 mm image within 40 seconds.

Specifications		WCS-D3525CB	WCS-D4535CB
Working distance(mm)		145 ± 2 mm	
Working load (kg)		20	
Table Lift Stroke(mm)		150	
Focus (z)		Auto Focus	
Drive control system		independent motor control	
SYSTEM	centrifugal lens magnification	0.16 X	
	large field of view(mm)	80*50	
	Large view measuring range (mm)	400*300	500*400
	small field of view(mm)	20*14	
	Small view measuring range (mm)	350*250	450*350
	repeatability (μm)	5	
	Motion Accuracy(mm)	3+L/200	
	Depth of Field (mm)	6mm@25Ip/mm (Large view )	
Depth of Field (mm)	0.6mm@64Ip/mm (Small view)		
Image Sensor		20 million USB3.0 industrial camera	
Software		CARVM Data Processing Professional Software	
Lighting System		Surface light and bottom light respectively	
Dimensions(mm) (L x W x H)		1000*690*1755	1130*810*1800
Weight (kg)		About 500 kg	About 570 kg