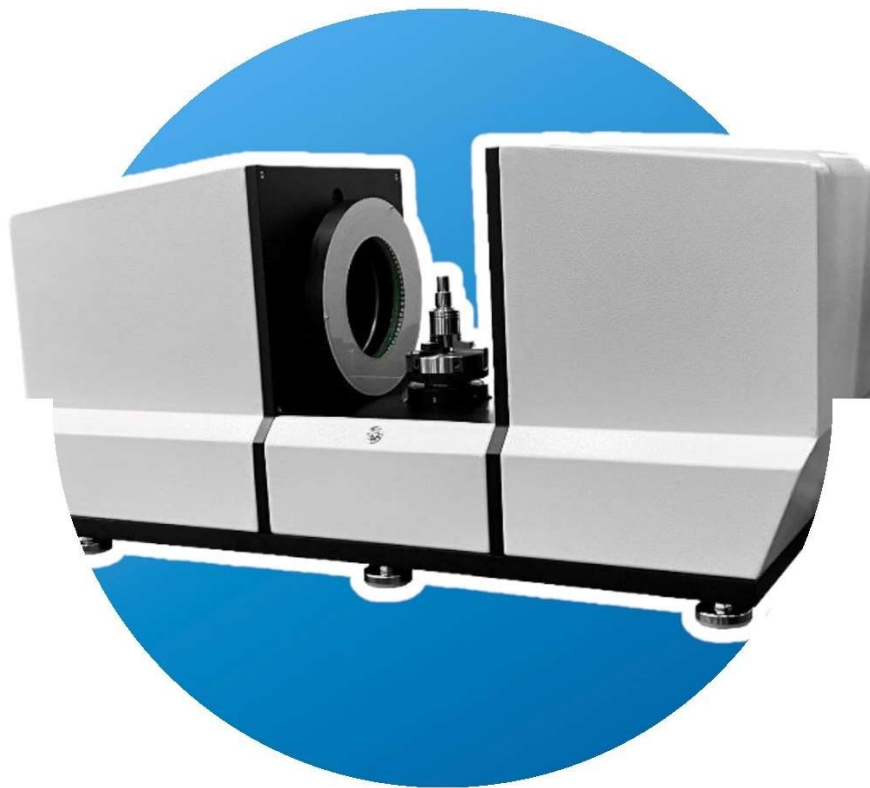




CARMAR ACCURACY CO., LTD.

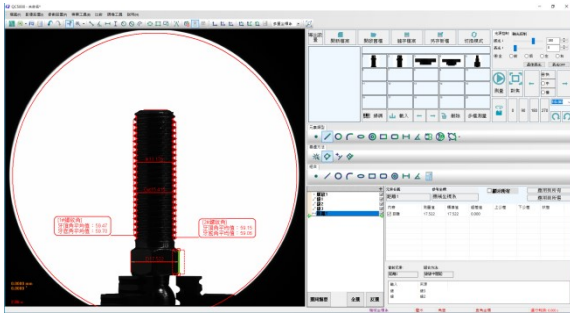
HORIZONTAL INSTANT MEASURING MACHINE

*360° non-blind spot,
from all possible angles
Arbitrary placement of samples,
Full-angle measurement*



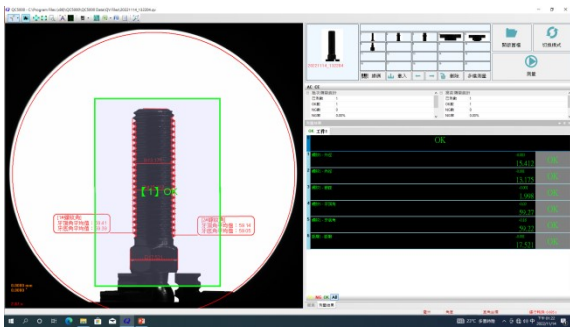
No. 6, 23rd Road , Industrial Park , Taichung City 40850 , Taiwan

Functions



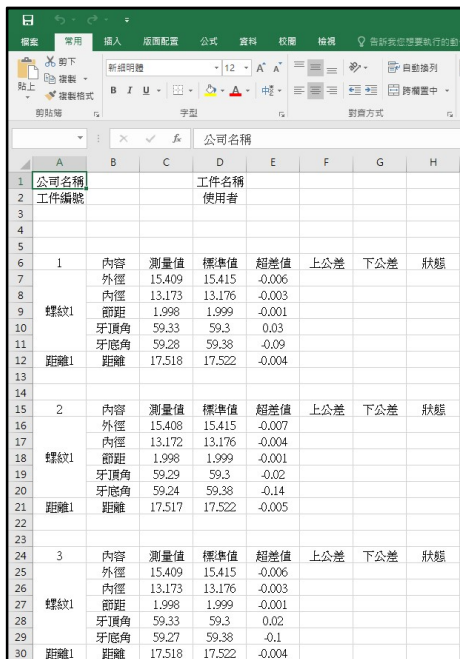
Recording

Create measurement files with QC5000 software, which can measure points, lines, circles, arcs, ellipses, rings, rectangles, slots, distances, angles, pitches, point sets, etc.



Online Instant Check

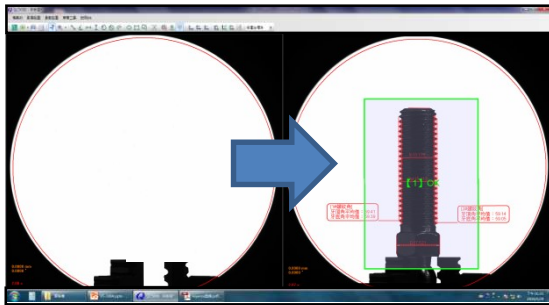
The inspection is completed after placement, and the results are reflected immediately and the data is combined to calculate the NG rate, so that the process parameters can be adjusted online to improve the product yield.



	公司名稱	工件名稱	使用者					
1	公司名稱							
2	工件編號							
3								
4								
5								
6	1	內容	測量值	標準值	超差值	上公差	下公差	狀態
7		外徑	15.409	15.415	-0.006			
8		內徑	13.173	13.176	-0.003			
9		節距	1.998	1.999	-0.001			
10		牙頂角	59.33	59.3	0.03			
11		牙底角	59.28	59.38	-0.09			
12		距離	距離	17.518	17.522	-0.004		
13								
14								
15	2	內容	測量值	標準值	超差值	上公差	下公差	狀態
16		外徑	15.408	15.415	-0.007			
17		內徑	13.172	13.176	-0.004			
18		節距	1.998	1.999	-0.001			
19		牙頂角	59.29	59.3	-0.02			
20		牙底角	59.24	59.38	-0.14			
21		距離	距離	17.517	17.522	-0.005		
22								
23								
24								
25	3	內容	測量值	標準值	超差值	上公差	下公差	狀態
26		外徑	15.409	15.415	-0.006			
27		內徑	13.173	13.176	-0.003			
28		節距	1.998	1.999	-0.001			
29		牙頂角	59.33	59.3	0.02			
30		牙底角	59.27	59.38	-0.1			
31		距離	距離	17.518	17.522	-0.004		

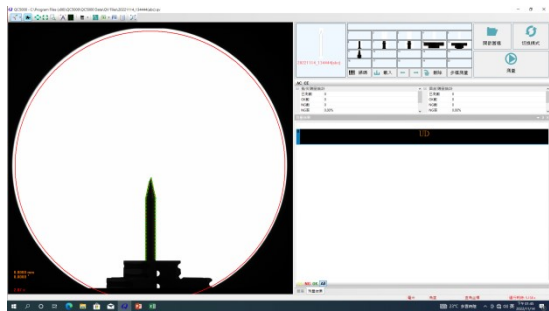
Statistical report export

The data after measurement is automatically brought into the report. There are three types of report formats, including default output, custom report and data import to the report specified by the customer, which can reduce the time for personnel to repeatedly input data.



AI automatic judgment

When the AI mode is turned on, as long as the customer changes the object to be tested, the software will automatically perform the measurement. If the customer needs a full inspection, it can be used with a robotic arm for measurement to reduce labor costs.



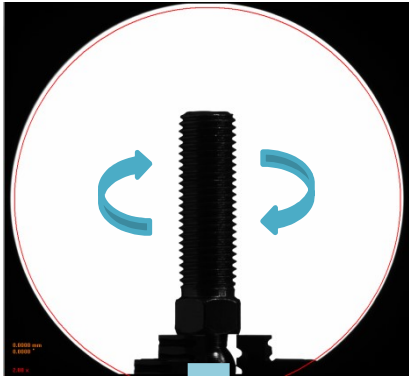
DXF comparison

It can import customer DXF files, and set the workpiece size tolerance zone, real-time image comparison to see if it exceeds the tolerance zone, and even output DXF with the software measurement function.

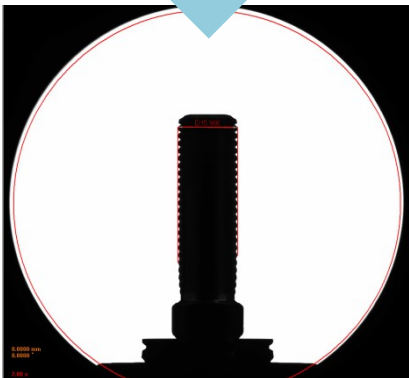


SPC statistics

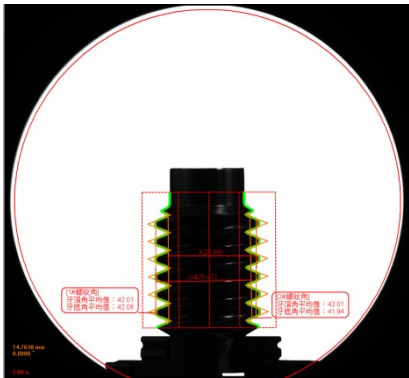
According to the measurement items, it can automatically calculate and display OK number, NG number, maximum value, minimum value, average value, σ , 3σ , 6σ , C_p , C_{pk} and other main statistical values. The management of batch engineering capacity is also quite easy.



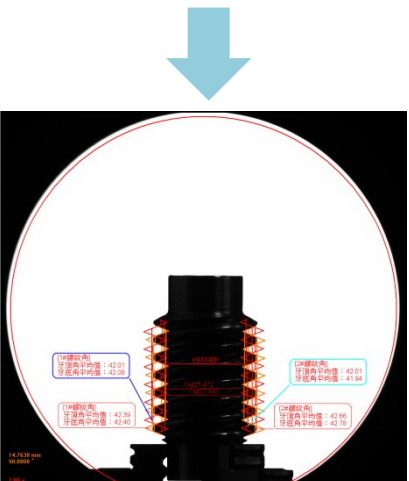
➤ Maximum size measurement



- Superimpose the image of the sample rotated 360° into a picture
- Measure the size of the picture
- It can avoid the non-maximum size caused by the measurement angle



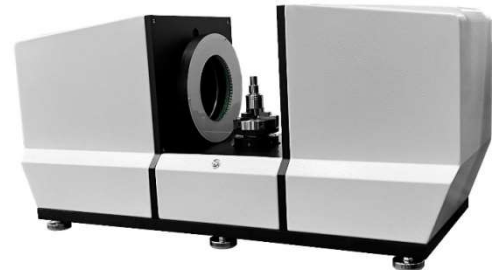
➤ Multi-angle measurement averaging (with software computing function)



- Avoid extreme values caused by measurement angle differences
- Sample placement does not require a specific angle
- Quick inspection of tools, lathe parts

Features

- ▶ 360 degree rotating stage
- ▶ Single program without dead angle measurement
- ▶ Special type for tools and lathe parts
- ▶ Instant detection of hundreds of sizes
- ▶ Equipped with SPC statistics system



Specifications

VH-100S		
Surface light source	Deployed	
Working distance (mm)	120	
Working load (kg)	3	
Movement stroke(mm)	20	
focus(z)	Auto focus	
Table Angle	360°	
Drive control system	Servo motor	
I M A G E	Telecentric head magnification	0.088 X
	Measuring field of view(mm)	85*65
	Repeatability (µm)	1
	Movement Accuracy (µm)	5
	Depth of Field (mm)	±8
Image detector	20 million USB3.0 Industrial camera	
Digital measuring system	CARMAR QC5000	
Lighting system	Contour	
Instrument Dimensions (L x W x H)	800*260*370 mm	
According to the weight of the device(kg)	About 40kg	



CARMAR ACCURACY CO., LTD.

No. 6, 23rd Road , Industrial Park , Taichung City 40850 , Taiwan

E-mail : royal@carmar-tech.com

TEL:886-4-23592289 #14

FAX:886-4-23598060

<http://www.carmar-tech.com>

Skype: carmar-sales